



Water fountains

Trough and valve combinations are sized to provide as much water as your animals want, yet at the same time, limit the amount that sits in the trough when they are not drinking. That way, the water is fresh and clean.

The heavy-duty, impact resistant, polyethylene fountains are totally sealed so moisture can't get to the insulation. In addition, the heavy wall, roto-molded one piece construction employs UV inhibitors for extended life.

The solid polyurethane foam insulation keeps water ice-free longer in winter, cooler in summer, without using electricity. A heating element for extreme periods of frost is optional.

The patented water seal design eliminates the need for gaskets that can freeze, crack and tear. This superior sealing technology keeps cold air away from the valve, which is the heart and soul of any fountain. By protecting the high capacity valves, we're protecting your investment.

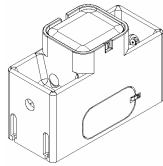
Easy access to all service areas (no tools needed).

The water fountains have smooth, curved surfaces, which makes them extremely animal friendly.

Long, long life, a fountain you can rely on, day in and day out. We offer a 10 year limited warranty program: five years full, followed by five years prorated.



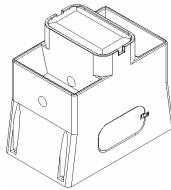
built stronger to last longer



Watermatic 150

Watermatic 150

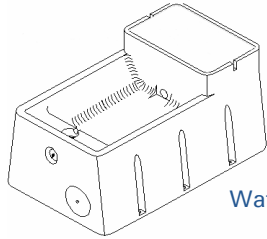
Length 85 cm
Width 46 cm
Drinking height 46 cm
Weight 21 kg
Trough capacity 16 liter
Animal capacity 10*
Price € 290,00



Watermatic 300

Watermatic 300

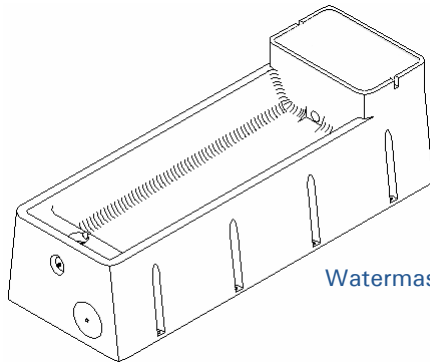
Length 91 cm
Width 55 cm
Drinking height 66 cm
Weight 31 kg
Trough capacity 31 liter
Animal capacity 30*
Price € 395,00



Watermaster 54

Watermaster 54

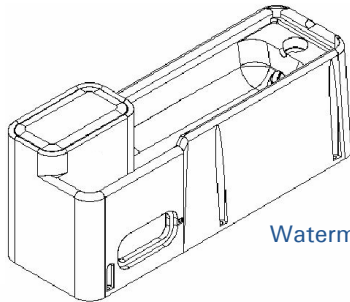
Length 137 cm
Width 84 cm
Drinking height 56 cm
Weight 57 kg
Trough capacity 68 liter
Animal capacity 50*
Price € 675,00



Watermaster 90

Watermaster 90

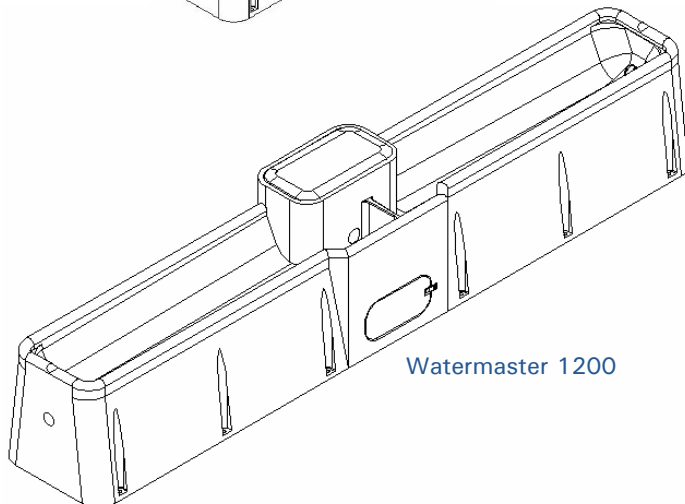
Length 229 cm
Width 84 cm
Drinking height 56 cm
Weight 82 kg
Trough capacity 114 liter
Animal capacity 70*
Price € 875,00



Watermaster 600

Watermaster 600

Length 183 cm
Width 61 cm
Drinking height 61 cm
Weight 64 kg
Trough capacity 106 liter
Animal capacity 60*
Price € 750,00



Watermaster 1200

Watermaster 1200

Length 366 cm
Width 61 cm
Drinking height cm
Weight 113 kg
Trough capacity 227 liter
Animal capacity 120*
Price€ 1.050,00

* Provided that they are reachable at all sides and connected to a pressure of about 2 bars.
Prices ex. VAT.

Brouwers Equipment B.V.
Postbus 203, NL-8901 BA Leeuwarden
Tel. 0031-58-2911129
Fax 0031-58-2911100
www.brouwersequipment.com

The range